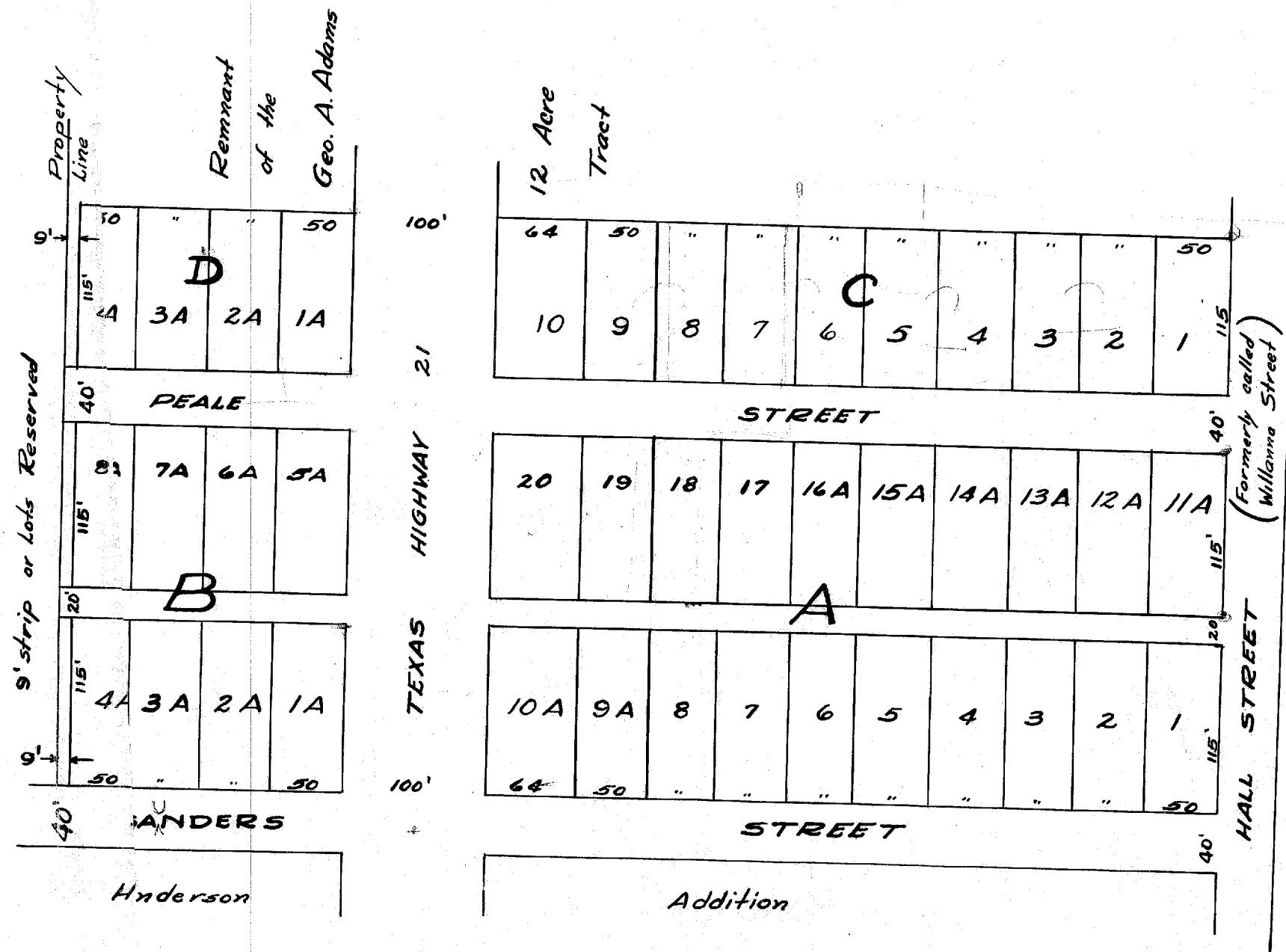


Entered on database 2/16/2000 WD



NOTE: Lot numbers which are in conflict with those shown on original plat are designated above by the suffix "A".

RESUBDIVISION OF THE GEORGE A. ADAMS SUBDIVISION OUT OF BRYAN'S THIRD ADDITION TO THE CITY OF BRYAN, TEXAS

D.R. 101

Pg. 513

Scale: 1" = 100'

NOV., 1939

